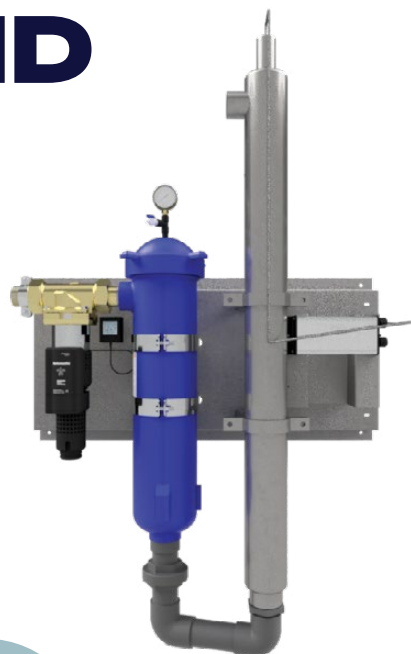


## D10 Series

# FILTRATION AND DISINFECTION MODULE

For control of bacteria, bad taste and odour as well as sediment such as dirt, rust, sand, hard water minerals, clay etc.



**DUAL STAGED SEDIMENT  
FILTER + AUTO BACKWASHING  
+ UV DISINFECTION**

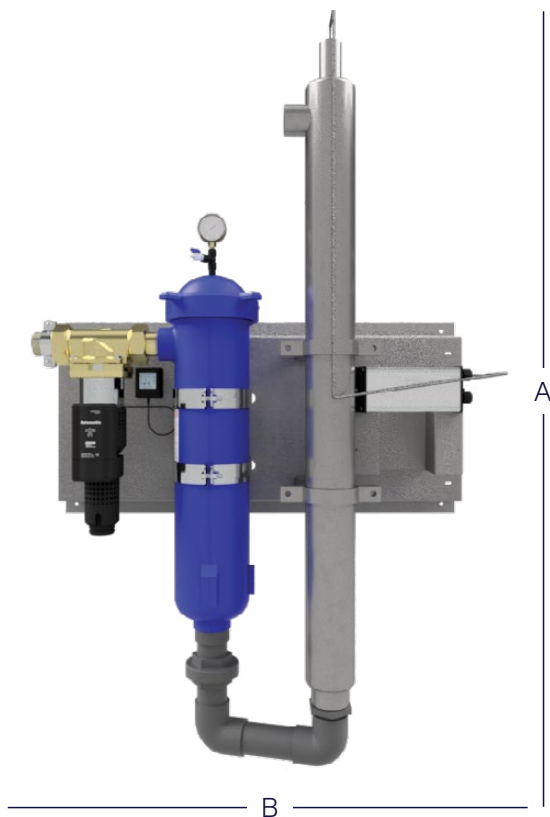


## FEATURES

- **Plug & Play** - Compact, pre-packaged design ensures quick and easy installation. Supplied fitted to backboard, minimising footprint.
- **Automatic Backwash Filter** - Complete with Timer Control with 100um stainless steel screen - quality German design and manufacture.
- **Durable** - Reinforced polypropylene housing, complete with 5 micron washable sediment filter
- **Maximum Bacteria Kill** - Utilises high output, eco-friendly UV disinfection technology to ensure efficiency
- **Optional** - Weatherproof, lockable floor-mount enclosure with HD powder-coat finish

# D10 Series

## PLANS/DRAWINGS



## SPECIFICATIONS

### PRODUCT CODE

D00301501

### FLOW RATES

Max flow rate 300L/m (18.0m<sup>3</sup>/h)

### OPERATING PRESSURES

Max pressure 690 kPa

### CONNECTIONS

Inlet/Outlet 2" BSP (50mm)

### POWER

Power supply 2 x 10 Amp GPO

### TEMPERATURE

Max temperature 45°C

### INSTALLED DIMENSIONS (MM)

Height (A)	Width (B)	Depth (C)
1200	1000	250

\* Additional 1100mm required for removal of UV lamps

### OPTIONAL WEATHERPROOF ENCLOSURE DIMENSIONS (MM)

Height (A)	Width (B)	Depth (C)
1620	1000	400

### REPLACEMENT ELEMENTS

Sediment Cartridge	S10100502 (5um)
UV Lamp	LL180-S4
UV Thimble	QD121028
UV Thimble O-Ring	O28-ST

Disclaimer. Southland Filtration reserves the right to, at any time change any details of design, specifications and performance figures of any published data.

**Freecall 1800 656 771**  
[southlandfiltration.com.au](http://southlandfiltration.com.au)

**southland**  
 FILTRATION

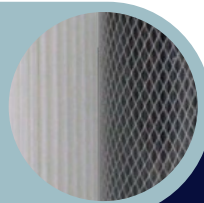
## D300

# FILTRATION & DISINFECTION MODULE

For control of bacteria, bad taste and odour as well as sediment such as dirt, rust, sand, hard water minerals, clay etc.



**TRIPLE STAGED SEDIMENT FILTERS + AUTO BACKWASHING + UV DISINFECTION**

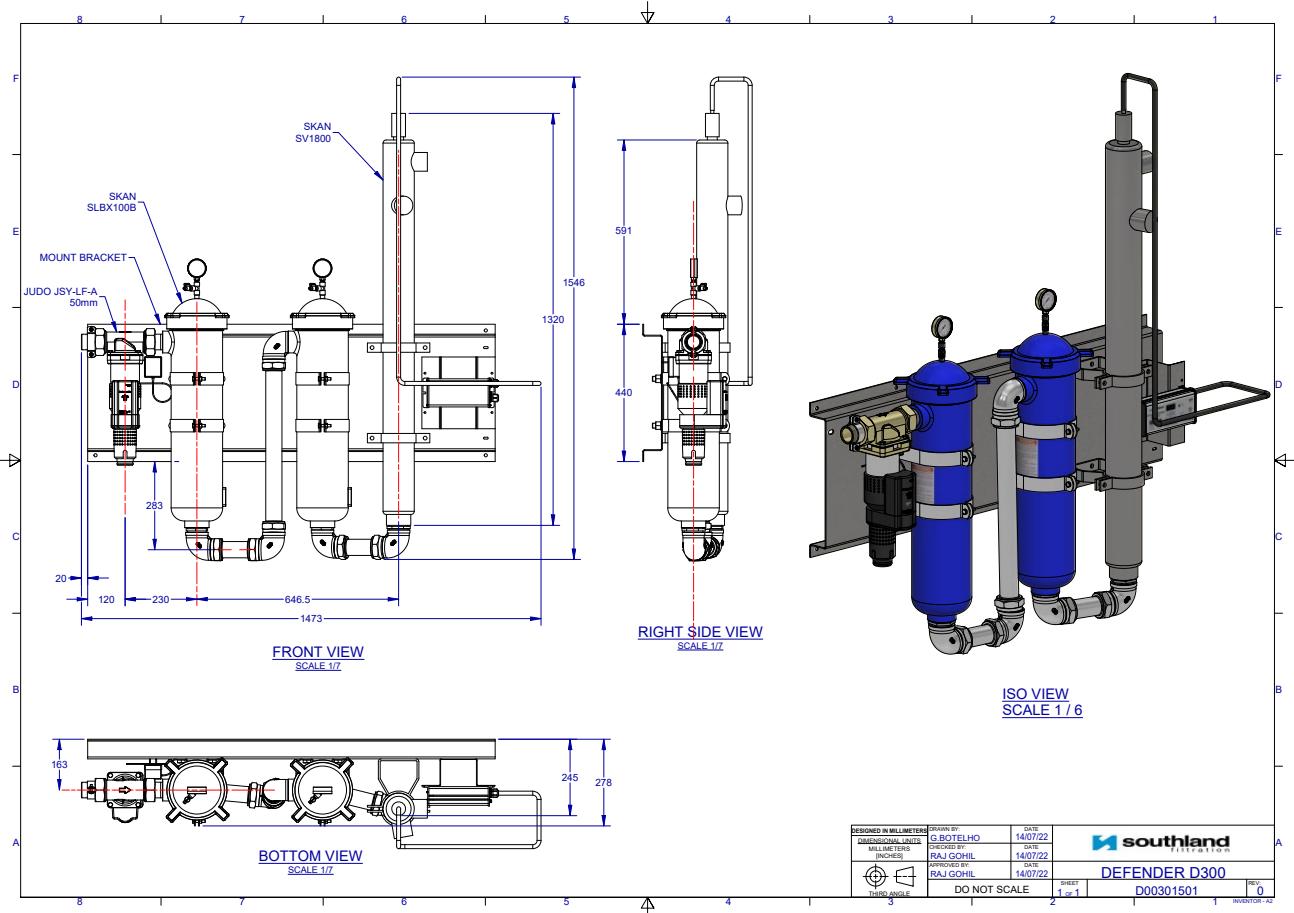


## FEATURES

- **Modular Design** - Pre-packaged design ensure quick and easy installation.
- **Plug & Play** - Compact, pre-packaged design ensures quick and easy installation. Supplied fitted to backboard, minimising footprint.
- **Automatic Backwash Filter** - Complete with Timer Control with 100um stainless steel screen - quality German design and manufacture.
- **Multiple Stages** - dual bag filter housings complete with 20 and 5 micron washable sediment filters
- **Maximum Bacteria Kill** - Utilises high output, eco-friendly UV disinfection technology to ensure maximum bacteria kill

# D300 Series

## PLANS/DRAWINGS



## SPECIFICATIONS

### PRODUCT CODE

D00500504

### FLOW RATES

Max flow rate 300L/m (18.0m3/h)

### OPERATING PRESSURES

Max pressure 600kPa

### CONNECTIONS

Inlet/Outlet 2" BSP (50mm)

### POWER

Power supply 2 x 10 Amp GPO

### TEMPERATURE

Max temperature 45°C

### INSTALLED DIMENSIONS (MM)

Width (A)	Height (B)	Depth (C)	Lid open (D)
1180	1500	350	N/A

### REPLACEMENT ELEMENTS

Sediment Cartridge	20um & 5um filter bags
Carbon Cartridge	1um, 5um, 20um, 50um (Refer to pricelist)
Quartz Thimble O-Ring	N/A
UV Thimble O-Ring	O28-ST
UV Lamp	LL-180-S4
UV Thimble	QD121028

Disclaimer. Southland Filtration reserves the right to, at any time change any details of design, specifications and performance figures of any published data.

**Freecall 1800 656 771**  
[southlandfiltration.com.au](http://southlandfiltration.com.au)

**southland**  
 FILTRATION