

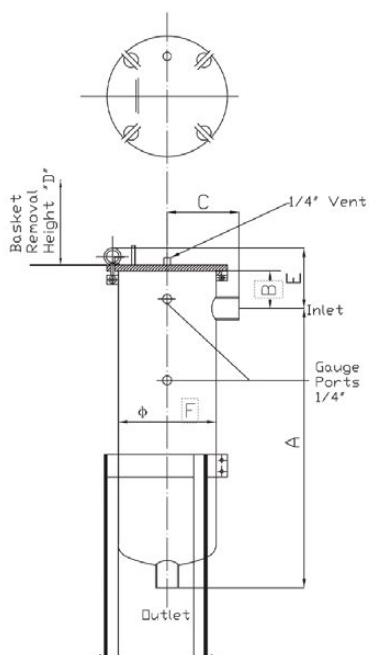
**SLB-SS-02****SKAN BAG  
FILTERS**

Versatile solution for water, oils, chemicals, beverages, paints, offering simplicity, speed, and cost-effectiveness over complex systems.

**SLB-SS SERIES****FEATURES**

- Flows up to 11.0 L/s
- Swing bolt lid closure mechanism
- Side inlet, bottom outlet
- Includes vent valve and pressure gauges
- 304 Grade stainless steel construction
- Max operating pressure: 1000kPa
- 50mm (2") Inlet /Outlet

# PLANS/DRAWINGS



## OPERATIONAL REQUIREMENTS

### PRODUCT CODE

S05101501

### FLOW RATES (M<sup>3</sup>/HR)

Max Flow Rate 40m<sup>3</sup>/hour (650 L/min)

### TEMPERATURE

Max temperature 110° C

### OPERATING PRESSURES (KPA)

Max operating pressure 1000 kPa

### CONNECTIONS

Inlet/Outlet (BPSM) 2" BSP (50mm)

### FILTER SURFACE AREA (M<sup>2</sup>)

0.5

### MICRON RATINGS AVAILABLE

1um, 5um, 10um, 20um, 50um, 100um

### WEIGHT (KG)

Packaged (kg) 35kg

Empty 30kg

In service (water) 60kg

### INSTALLED DIMENSIONS (MM)

Height 1290 adjustable

Width 300

Depth 300

Disclaimer. Southland Filtration reserves the right to, at any time change any details of design, specifications and performance figures of any published data.

**Freecall 1800 656 771**  
[southlandfiltration.com.au](http://southlandfiltration.com.au)

**southland**  
 FILTRATION

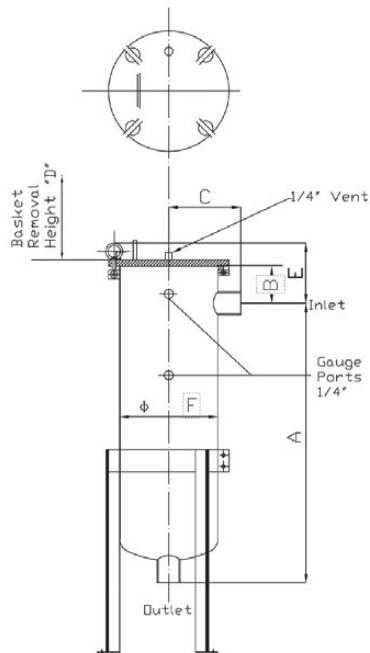
**SLB-SS-04****SKAN BAG  
FILTERS**

Versatile solution for water, oils, chemicals, beverages, paints, offering simplicity, speed, and cost-effectiveness over complex systems.

**SLB-SS SERIES****FEATURES**

- Flows up to 3.6 L/s
- Swing bolt lid closure mechanism
- Side inlet, bottom outlet
- Includes vent valve and pressure gauges
- 304 Grade stainless steel construction
- Max operating pressure: 1000kPa
- 25mm (1") BSPF Inlet/Outlet

# PLANS/DRAWINGS



## OPERATIONAL REQUIREMENTS

### PRODUCT CODE

S05102001

### FLOW RATES (M<sup>3</sup>/HR)

Max Flow Rate 12m<sup>3</sup>/hour (200 L/min)

### TEMPERATURE

Max temperature 110° C

### OPERATING PRESSURES (KPA)

Max operating pressure 1000 kPa

### CONNECTIONS

Inlet/Outlet (BPSM) 1" BSP (25mm)

### FILTER SURFACE AREA (M<sup>2</sup>)

0.16

### MICRON RATINGS AVAILABLE

1um, 5um, 10um, 20um, 50um, 100um

### WEIGHT (KG)

Packaged (kg) 15kg

Empty 11kg

In service (water) 18kg

### INSTALLED DIMENSIONS (MM)

Height 500 adjustable

Width 250

Depth 250

Disclaimer. Southland Filtration reserves the right to, at any time change any details of design, specifications and performance figures of any published data.

**Freecall 1800 656 771**  
[southlandfiltration.com.au](http://southlandfiltration.com.au)

**southland**  
 FILTRATION

## SLB-SS-100

# SKAN BAG FILTERS

Versatile solution for water, oils, chemicals, beverages, paints, offering simplicity, speed, and cost-effectiveness over complex systems.

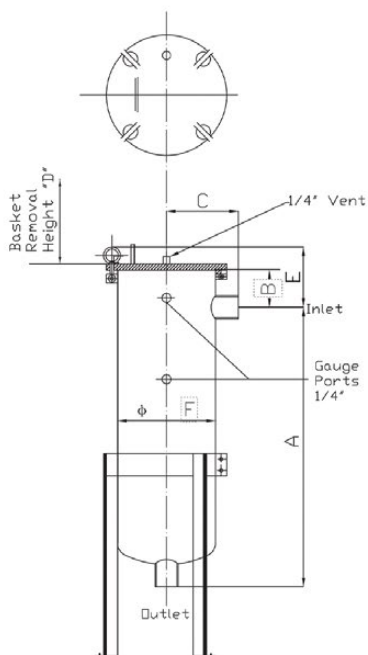


## SLB-SS SERIES

## FEATURES

- Flows up to 5.0 L/s
- Swing bolt lid closure mechanism
- Side inlet, bottom outlet
- 304 Grade stainless steel construction
- Max operating pressure: 1000kPa
- High pressure units avail. (eg 1600kPa)
- 50mm (2") BSPF Inlet/Outlet

# PLANS/DRAWINGS



## OPERATIONAL REQUIREMENTS

### PRODUCT CODE

S05102501

### FLOW RATES (M<sup>3</sup>/HR)

Max Flow Rate 18m<sup>3</sup>/hour (300 L/min)

### TEMPERATURE

Max temperature 110° C

### OPERATING PRESSURES (KPA)

Max operating pressure 1000 kPa

### CONNECTIONS

Inlet/Outlet (BPSM) 2" BSP (50mm)

### FILTER SURFACE AREA (M<sup>2</sup>)

0.185

### MICRON RATINGS AVAILABLE

1um, 5um, 10um, 20um, 50um, 100um

### WEIGHT (KG)

Packaged (kg) 26kg

Empty 22kg

In service (water) 36kg

### INSTALLED DIMENSIONS (MM)

Height 650 adjustable

Width 150

Depth 150

Disclaimer. Southland Filtration reserves the right to, at any time change any details of design, specifications and performance figures of any published data.

**Freecall 1800 656 771**  
[southlandfiltration.com.au](http://southlandfiltration.com.au)

**southland**  
 FILTRATION